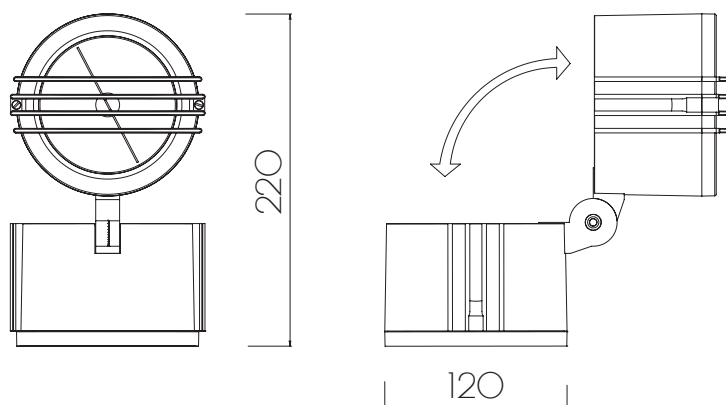
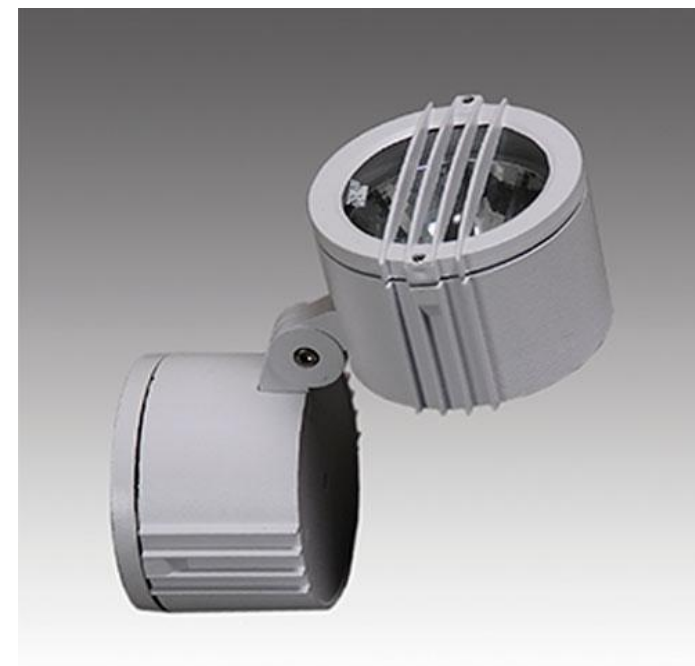







Artefactos estancos de aplicar en pared, de distribución lumínica directa orientable. Cuerpo y rejas realizados en aluminio inyectado con recubrimiento termo-convertible en diferentes colores



Lámpara	Potencia	Zócalo	Ip
 QR-111	50w	GU5,3	65
 PAR-20	60w	E27	65
 PAR-30	75w	E27	65
 LED	12w	-	65
 HCI-T	150w	G12	65

